



*"The
Strongest
Hose Clamp System
in the World"*



herbie clip hose clamp

Herbie Clip® double grip plastic hose clamps have been manufactured by HCL for many years. HCL's manufacturing facilities are fully automated and highly efficient enabling the cost effective production of millions of Herbie Clip® double grip plastic hose clamps every year.

The Herbie Clip® was developed as the original double bonded plastic hose clamp, replacing a single row of teeth with 2 rows gave the Herbie Clip® plastic hose clamp over twice the strength of competitive products.

Standing the test of time the Herbie Clip® plastic hose clamp markets are diverse and cover any application where there is a hose and spigot, the most common are White Goods, Agricultural, Automotive, Spas, Medical, General Industry, Irrigation and Food Processing.

Herbie Clip® Fitting Tools

A choice of manual and semi-automatic tools are available to use with Herbie Clip® plastic hose clamps including the manual installation tool. HCL also has extensive experience in providing installation solutions to the OEM market.



Herbie Clip®
Air Tool



Herbie Clip®
Manual Installation Tool



Herbie Clip®
Electronic Control Unit

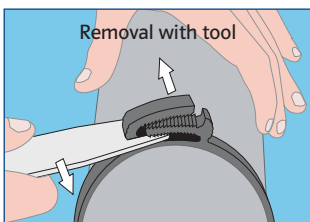
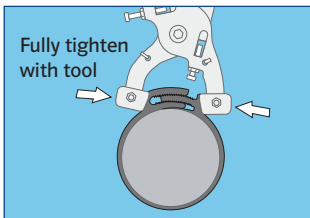
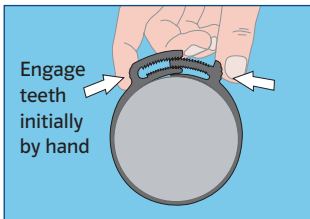
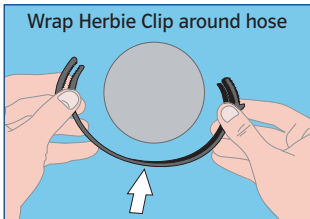
Further options available – see Air Tool flyer

Also available



Also available from HCL, Ezyklik™ Plastic Hose clamp – features: low profile head – high temperature resistance – highly suited for Automotive and White Good Applications.

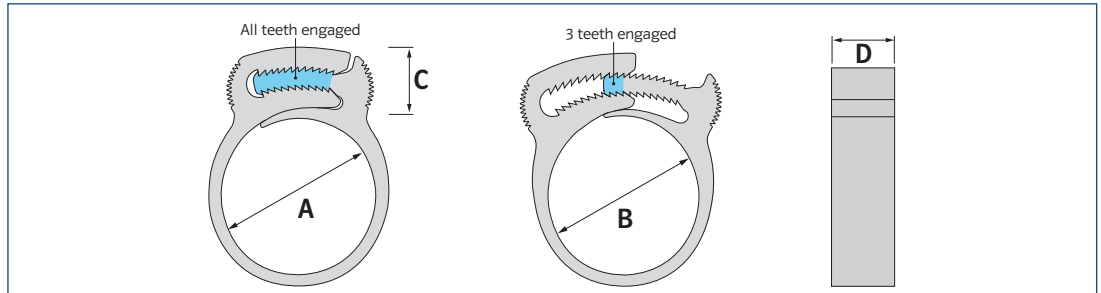
Herbie Clip® Installation and Removal



Herbie Clip® double grip plastic hose clamp features:

- 43 sizes ranging from 5.6mm (0.22") to 120+mm (4.7")
- Minimum leak path – almost fully formed circle
- Lightweight – up to 60% lighter than alternative metal solutions
- Made from a choice of materials – standard material is Nylon 6.6. (UL listed & FDA approved) Polypropylene is available on request
- Fire resistance – Nylon 6.6. is also HB-V2 rated – Self Extinguishing
- Non corrosive and no moving parts – preventing seizure or jamming
- Fully ROHS compliant – **RoHS** ✓
- Temperature resistance ranging from -40°C (-40°F) to +170°C (+340°F) dependant on material (Nylon 6.6. Max long term temp 125°C (255°F) – Occasional Peak temp 170°C (340°F) (Polypropylene – Max long term temp 60°C (140°F) – Occasional Peak temp 90°C (195°F))
- No sharp edges – improving installation safety
- Full range of manual and air installation tooling including high level control electronic units which eliminate operator error
- High chemical resistance and further resistant to oils, petrol's and solvents
- Can resist pressures of up to 200 psi (14bar) and above – fully dependant on quality of hose and spigot fitting
- Full Colour Options – (Black as standard for high UV resistance)
- Manufactured to ISO 9001-2000
- PPAP3 Certification available
- IMDS registered

Herbie Clip® Sizes



| Herbie Clip® Size | Minimum diameter (A) | | Maximum diameter (B) | | Head Height (C) | | Width (D) | | Nylon 6.6 Weight | | Polypropylene Weight | |
|-------------------|----------------------|------|----------------------|------|-----------------|------|-----------|------|------------------|--------|----------------------|--------|
| | mm | inch | mm | inch | mm | inch | mm | inch | grams | ounces | grams | ounces |
| A | 5.6 | 0.22 | 6.5 | 0.26 | 8.3 | 0.33 | 4.2 | 0.17 | 0.51 | 0.017 | 0.41 | 0.014 |
| AA | 6.5 | 0.26 | 7.9 | 0.31 | 9.9 | 0.39 | 4.5 | 0.18 | 0.83 | 0.028 | 0.63 | 0.022 |
| B | 7.9 | 0.31 | 9.2 | 0.36 | 9.3 | 0.37 | 4.6 | 0.18 | 0.83 | 0.028 | 0.65 | 0.022 |
| BB | 9.2 | 0.36 | 10.3 | 0.41 | 10.9 | 0.43 | 4.5 | 0.18 | 1.03 | 0.035 | 0.8 | 0.027 |
| C | 10.2 | 0.40 | 11.8 | 0.47 | 12.2 | 0.48 | 5.8 | 0.23 | 1.71 | 0.059 | 1.3 | 0.045 |
| CC | 11.1 | 0.44 | 12.9 | 0.51 | 12.3 | 0.48 | 6.1 | 0.24 | 1.92 | 0.066 | 1.49 | 0.051 |
| D | 12.0 | 0.47 | 13.8 | 0.54 | 12.9 | 0.51 | 6.1 | 0.24 | 1.77 | 0.061 | 1.37 | 0.047 |
| E | 13.1 | 0.52 | 15.1 | 0.59 | 13.6 | 0.54 | 7.2 | 0.28 | 2.93 | 0.100 | 2.29 | 0.078 |
| F | 15.0 | 0.59 | 17.1 | 0.67 | 12.9 | 0.51 | 7.1 | 0.28 | 3.07 | 0.105 | 2.41 | 0.083 |
| G | 16.9 | 0.67 | 19.1 | 0.75 | 12.5 | 0.49 | 6.9 | 0.27 | 2.78 | 0.095 | 2.19 | 0.075 |
| H | 18.1 | 0.71 | 20.6 | 0.81 | 12.7 | 0.50 | 7.1 | 0.28 | 3.16 | 0.108 | 2.45 | 0.084 |
| J | 20.3 | 0.80 | 23.0 | 0.91 | 14.2 | 0.56 | 6.4 | 0.25 | 3.49 | 0.120 | 2.65 | 0.091 |
| K | 22.2 | 0.87 | 24.9 | 0.98 | 13 | 0.51 | 7.0 | 0.28 | 3.58 | 0.123 | 2.76 | 0.095 |
| L | 24.5 | 0.97 | 27.6 | 1.09 | 12.5 | 0.49 | 7.1 | 0.28 | 3.61 | 0.124 | 2.83 | 0.097 |
| M | 26.5 | 1.04 | 29.5 | 1.16 | 13.4 | 0.53 | 7.4 | 0.29 | 4.93 | 0.169 | 3.81 | 0.131 |
| N | 28.8 | 1.13 | 32.2 | 1.27 | 13.4 | 0.53 | 9.0 | 0.35 | 5.83 | 0.200 | 4.31 | 0.148 |
| P | 32.0 | 1.26 | 34.8 | 1.37 | 13.8 | 0.54 | 9.1 | 0.36 | 5.83 | 0.200 | 4.57 | 0.157 |
| Q | 34.3 | 1.35 | 37.9 | 1.49 | 13.5 | 0.53 | 8.9 | 0.35 | 6.24 | 0.214 | 4.83 | 0.166 |
| R | 38.0 | 1.50 | 41.0 | 1.61 | 14.1 | 0.56 | 9.2 | 0.36 | 6.47 | 0.222 | 5.07 | 0.174 |
| S | 40.1 | 1.58 | 44.2 | 1.74 | 13.4 | 0.53 | 9.0 | 0.35 | 6.47 | 0.222 | 5.05 | 0.173 |
| T | 43.2 | 1.70 | 46.2 | 1.82 | 12.8 | 0.50 | 8.9 | 0.35 | 6.54 | 0.224 | 5.22 | 0.179 |
| U | 46.0 | 1.81 | 50.5 | 1.99 | 14.4 | 0.57 | 9.0 | 0.35 | 7.01 | 0.240 | 5.34 | 0.183 |
| V | 48.5 | 1.91 | 53.8 | 2.12 | 14.4 | 0.57 | 9.0 | 0.35 | 7.95 | 0.272 | 6.03 | 0.207 |
| W | 53.0 | 2.09 | 56.5 | 2.22 | 15 | 0.59 | 9.0 | 0.35 | 8.12 | 0.278 | 6.22 | 0.213 |
| X | 55.0 | 2.17 | 60.5 | 2.38 | 15.5 | 0.61 | 9.4 | 0.37 | 9.83 | 0.337 | 7.63 | 0.261 |
| 59 | 59.0 | 2.32 | 64.7 | 2.55 | 17 | 0.67 | 9.3 | 0.37 | 10.17 | 0.349 | 7.93 | 0.27 |
| 64 | 63.0 | 2.48 | 67.4 | 2.65 | 15.6 | 0.61 | 9.4 | 0.37 | 9.47 | 0.325 | 7.39 | 0.253 |
| 65 | 65.0 | 2.56 | 69.0 | 2.72 | 16 | 0.63 | 9.5 | 0.37 | 10.72 | 0.367 | 8.36 | 0.287 |
| 66 | 65.8 | 2.59 | 71.7 | 2.82 | 15.7 | 0.62 | 9.2 | 0.36 | 10.90 | 0.374 | 8.50 | 0.291 |
| 70 | 70.0 | 2.76 | 75.4 | 2.97 | 15.5 | 0.61 | 9.1 | 0.36 | 11.80 | 0.404 | 9.20 | 0.315 |
| 75 | 74.7 | 2.94 | 80.5 | 3.17 | 16.5 | 0.65 | 9.1 | 0.36 | 13.04 | 0.447 | 10.17 | 0.349 |
| 78 | 77.7 | 3.06 | 81.2 | 3.20 | 16.7 | 0.66 | 9.0 | 0.35 | 10.69 | 0.366 | 8.34 | 0.286 |
| 80 | 79.8 | 3.14 | 85.0 | 3.35 | 17.7 | 0.70 | 9.0 | 0.35 | 12.27 | 0.420 | 9.57 | 0.328 |
| 85 | 85.1 | 3.35 | 90.6 | 3.57 | 17.2 | 0.68 | 8.9 | 0.35 | 11.96 | 0.410 | 9.33 | 0.320 |
| 91 | 91.0 | 3.58 | 96.0 | 3.78 | 16.7 | 0.66 | 9.5 | 0.37 | 11.50 | 0.394 | 8.97 | 0.307 |
| 96 | 97.7 | 3.85 | 102.1 | 4.02 | 17.4 | 0.69 | 8.5 | 0.34 | 13.84 | 0.474 | 10.80 | 0.370 |
| 105 | 105.3 | 4.15 | 111.8 | 4.40 | 16.2 | 0.64 | 8.9 | 0.35 | 14.41 | 0.494 | 11.24 | 0.385 |
| 109 | 108.0 | 4.25 | 114.3 | 4.50 | 17.4 | 0.69 | 9.0 | 0.35 | 15.55 | 0.533 | 12.13 | 0.416 |
| 115 | 115.0 | 4.52 | 121.0 | 4.76 | 17.4 | 0.69 | 9.5 | 0.37 | 14.90 | 0.511 | 11.62 | 0.398 |
| 163 | 163.0 | 6.42 | 169.0 | 6.65 | 16 | 0.63 | 9.5 | 0.37 | 18.82 | 0.645 | 14.68 | 0.503 |

ALL WEIGHTS AND DIMENSIONS ARE ±2.5%